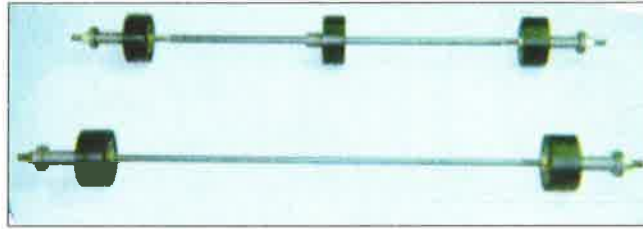


IH45K SERIES INSTALLATION INSTRUCTIONS for CASE-IH COMBINES



Kit#

IH45K37 - for combines with two-strand chains 37" wide

IH45K47 - for combines with two-strand chains 47" wide

IH45K473 - for combines with three-strand chains 47" wide

All kits include the complete roller assembly (4-grade 8 nuts, 4-star washers, 2-flat washers (for ends of shaft), 1 threaded shaft)

To install the IH45K Assembly

(Right and left sides of combine as viewed from operator's position.)

Right side:

1. Open feeder chain cover. Remove safety shield covering feeder chain drive belts on right side. (ref.#1) Remove safety shield mounting bracket (two 3/8" bolts). Loosen feeder drive belt tensioner pulley (ref.#2) (all combines 1993 and later have special bolt through feeder drive tension idler pulley.) Please note bolt head position. It has ref. mark on it for alignment of pulley, belts and their adjustments. Remove feeder drive tension idler pulley. (ref.#2) Loosen tension on feeder chain if necessary. Remove existing roller kit if it has one.
2. Using template #IH45KT (supplied w/roller assembly), insert two 3/8" x 1" bolts through template and into safety shield mounting bracket holes in feeder housing, (ref.#3) holding template firmly against feeder housing; drill or punch through ref. hole R to feeder housing.
3. Drill 1/8" pilot hole and finish w/11/16" hole at this location. (Please note that the 11/16" hole is needed to insert the shaft in at an angle from the inside of the feeder house assembly.) (11/16" holesaw w/1/4" pilot works well). **Attn.** On early models w/o safety shield mounting bracket bolted to feeder housing at this location. (ref.#3 & #4) Measure 6" forward of inner cross member tube & 5-7/8" down from top of feeder house for proper location of 11/16" mounting hole: drill from the outside of the feeder house a 1/8" pilot hole and finish w/11/16" hole (see diagram for location). (ref.#4 & #5) Deburr hole inside & outside. If you have no template, this procedure would work from both sides.

Left side:

1. Slip notched end of template over header level adjustment tube, (welded to feeder housing). (ref.#6). Holding template firmly against feeder house, drill or punch through ref. hole L. to feeder house, drill 1/8" pilot hole and finish w/11/16" hole at this location. Deburr hole inside and out.
2. Take your roller assembly and back off both inside nuts, as far as possible, towards the center of the shaft and remove the outside nut and washers from one end, keeping the rollers on the shaft. (The center roller is pre-set).
3. Insert opposite end of shaft w/nut and washers on down into feeder housing, far enough so that shaft end without nut and washer can be inserted into 11/16" hole, so that the shaft may be lifted in line with the opposite hole. Remove nut and washers. Enter shaft into the second hole just enough to place large washer and locknut on outside, flush with end of shaft. Do the same on opposite end and finger tighten to frame, making sure the rollers are centered on the chain. Tighten the inside nuts just to flatten the lockwashers on both sides. Tighten the outside locknuts to about 150 ft/lbs torque. Recheck the two inside nuts for tightness.

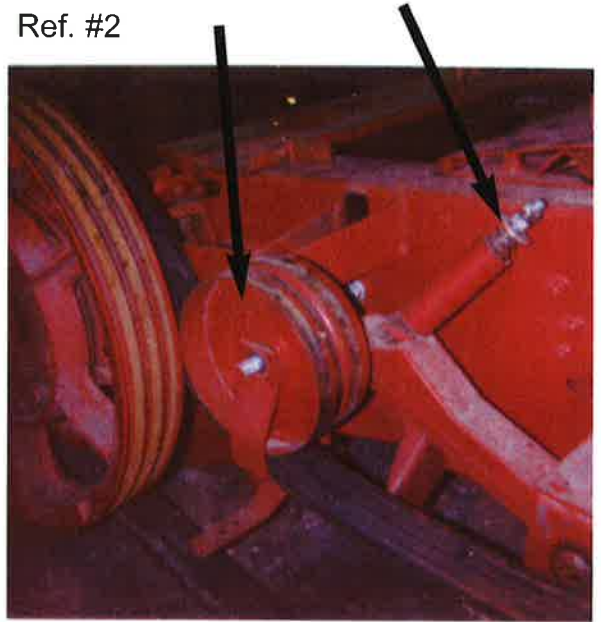
Adjust feeder chain tension and clearance to factory specs. Install feeder drive belt tension idler (check bolt head position), set tension and check for alignment. **Replace** safety shield mounting bracket and **all safety shields.**

Replacement bearing kits are available (part #BGAS/35)

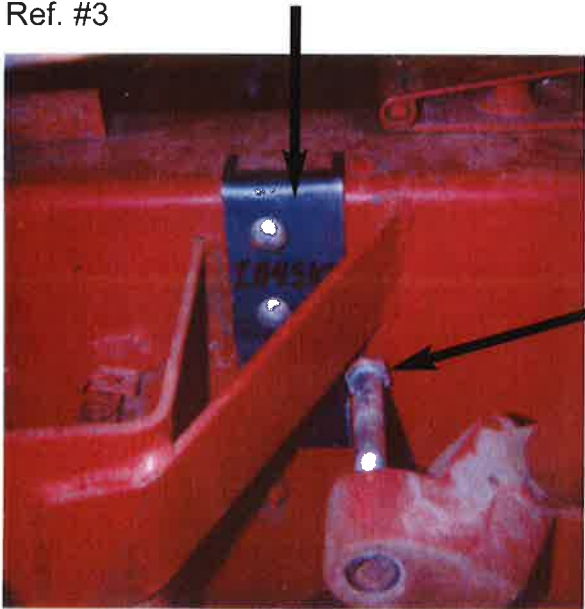
Ref. #1



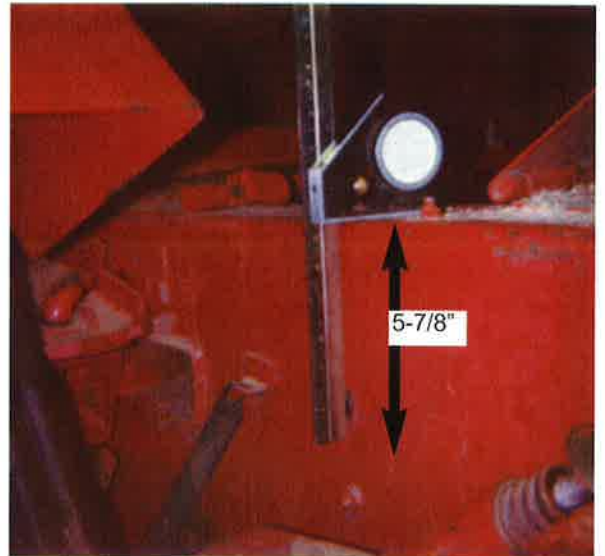
Ref. #2



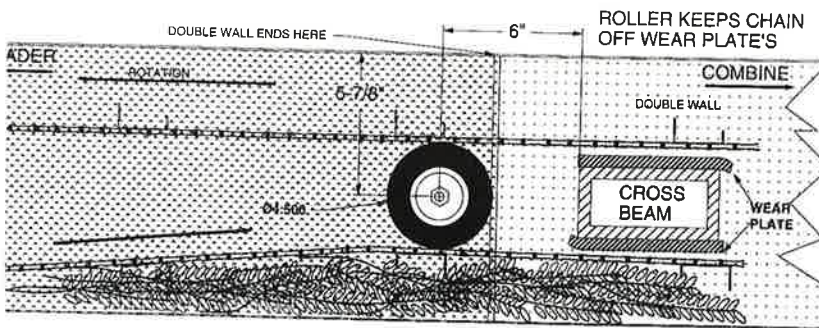
Ref. #3



Ref. #4



Ref. #5



Ref. #6

